



Making Biodiversity Count: MEL and Indicators in BESTLIFE2030

Capacity Development Sessions
(2nd Call for Proposals)
September 2025

Coordinator

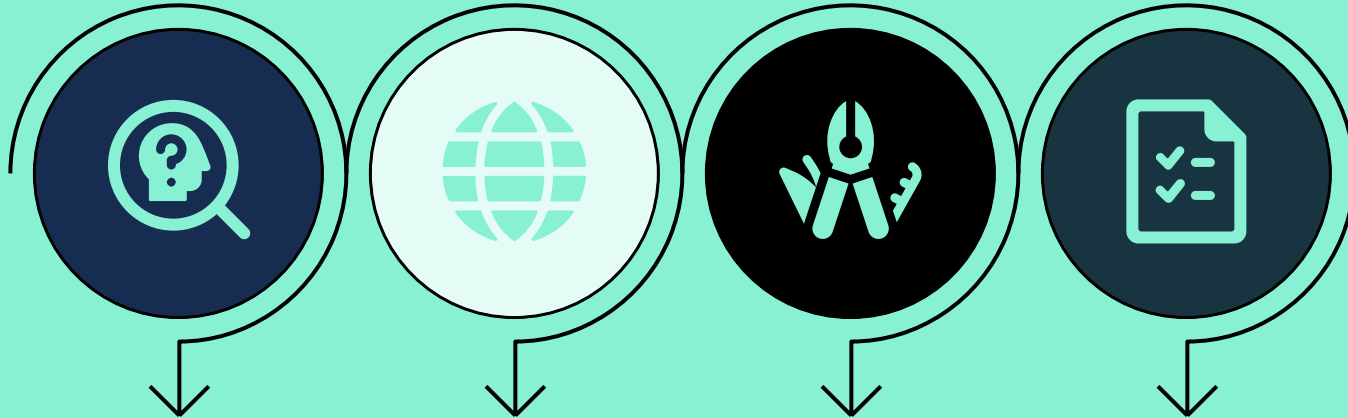
Regional hubs

Associated partners

Donors



Narrative: First context, then Concepts



WHY

BESTLIFE2030's programme ToC (Big picture impact).

WHAT

Conservation problems across all regions.

HOW

Tools design, ToC, LogFrame, SMART indicators (platform, etc).

REQUIREMENTS

BEST indicators.

BESTLife 2030 THEORY OF CHANGE

"Hello and welcome! I'm here to guide you through our **Theory of Change** - a clear framework for how we create meaningful and lasting impact."



Provide technical and financial resources to support biodiversity projects

Develop partnerships with local and international conservation organisations

Organise capacity-building workshops and training programs for stakeholders

Facilitate community engagement and participation in conservation initiatives

INPUTS

Projects developed for local and regional biodiversity conservation

Projects implemented and monitored to ensure project quality and impact

Partnerships strengthened and community participation enhanced

Sustainability of projects supported and exit strategy of BESTLife2030 developed

Projects delivered, and training enhances organisational capacity

Tangible contributions made to global biodiversity targets

Cross-border collaborations and policy contributions enhanced

Knowledge sharing promoted across biodiversity initiatives

OUTPUTS

Communications products created by grantees for awareness campaigns

Grant making processes centralised via portal for implementation

Mechanisms developed to track progress and share lessons

Knowledge sharing promoted across biodiversity initiatives

OUTCOMES

Strengthen the capacity to build, implement, and sustain conservation-led projects

Improve project sustainability and expand biodiversity conservation efforts

Advance contributions to regional and international biodiversity strategies

IMPACT



Advance biodiversity conservation by supporting sustainable and effective local projects in the European Union's (EU) Outermost Regions (ORs) and Overseas Countries and Territories (OCTs)

"Step 1: **Inputs** - the essential resources that drive the programme forward. This includes funding, expertise, partnerships - everything needed to carry out activities and deliver results effectively!"



"Step 2: **Outputs** - the tangible products and services delivered as a result of project activities. These could be training programmes, policy guidelines, or other direct results that set the stage for lasting change."



"Step 3: **Outcomes** - the real-world changes that emerge once outputs are in place. These include shifts in knowledge, behaviours or practices among beneficiaries, leading to stronger capacities and improved performance."



"Step 4: **Impacts** - the ultimate change in state, condition, or well-being that the programme contributes to. This is the long-term, sustainable transformation experienced by beneficiaries - healthier ecosystems, or effective conservation areas."



Overview

This session gives you **practical, hands-on guidance** on the Monitoring, Evaluation, and Learning (MEL) process in **BESTLIFE2030**. You will see how to use simple tools to design strong projects and show the impact of your work.



Key Concepts

Results-Based Management,
Theory of Change, and
LogFrame



Pathway to Impact

Learn how to design a project
with clear outcomes



Effective MEL

Use MEL tools for planning,
monitoring, evaluation, and
learning

Starting with the 'Why': Project Design

Developing Your Pathway to Impact

Strong projects clearly explain the problem they are trying to address and how they will deliver change. When designing your project, consider these fundamental questions.



Problem & Stakeholders

What is the conservation concern? Who is involved, and how will they benefit from the expected change?



Methodology & Activities

How will you achieve this change? What key activities need to be carried out to achieve your expected results?



Risks & Mitigation

What potential problems or risks may affect your project? How can you mitigate and manage them?



Measurement & Success

How will the progress and ultimate success of the project be demonstrated and measured?

Results-Based Management (RBM)

A Strategy for Achieving and Measuring Impact

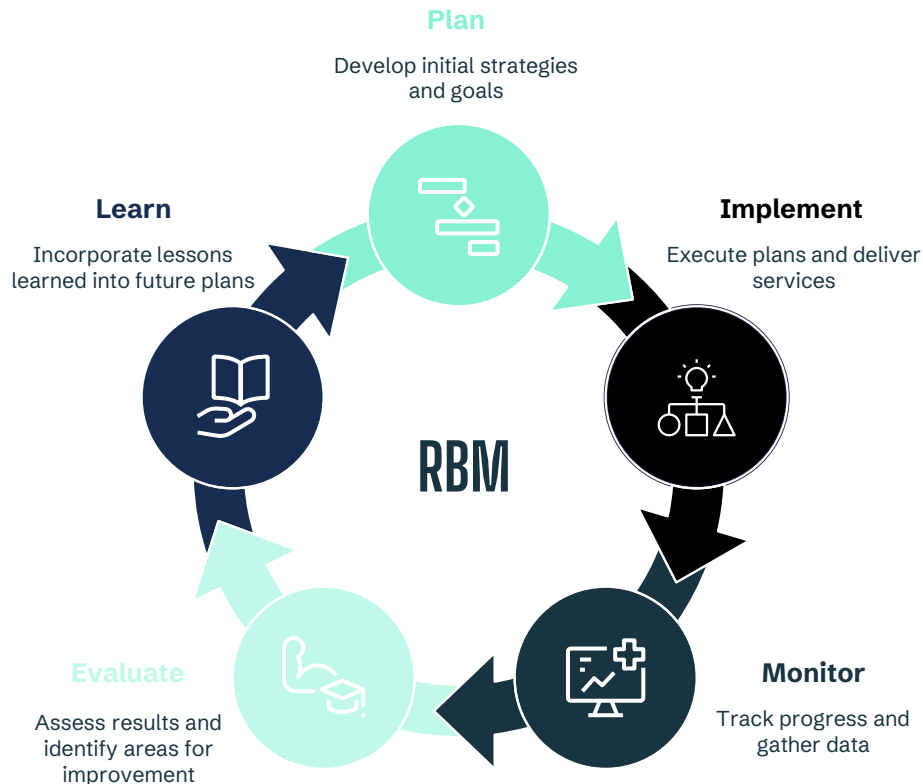
RBM is a management strategy ensuring that all processes contribute to achieving desired results (outputs, outcomes, and impact). It uses evidence on actual results to inform decision-making, accountability, and reporting.

Life-Cycle Approach

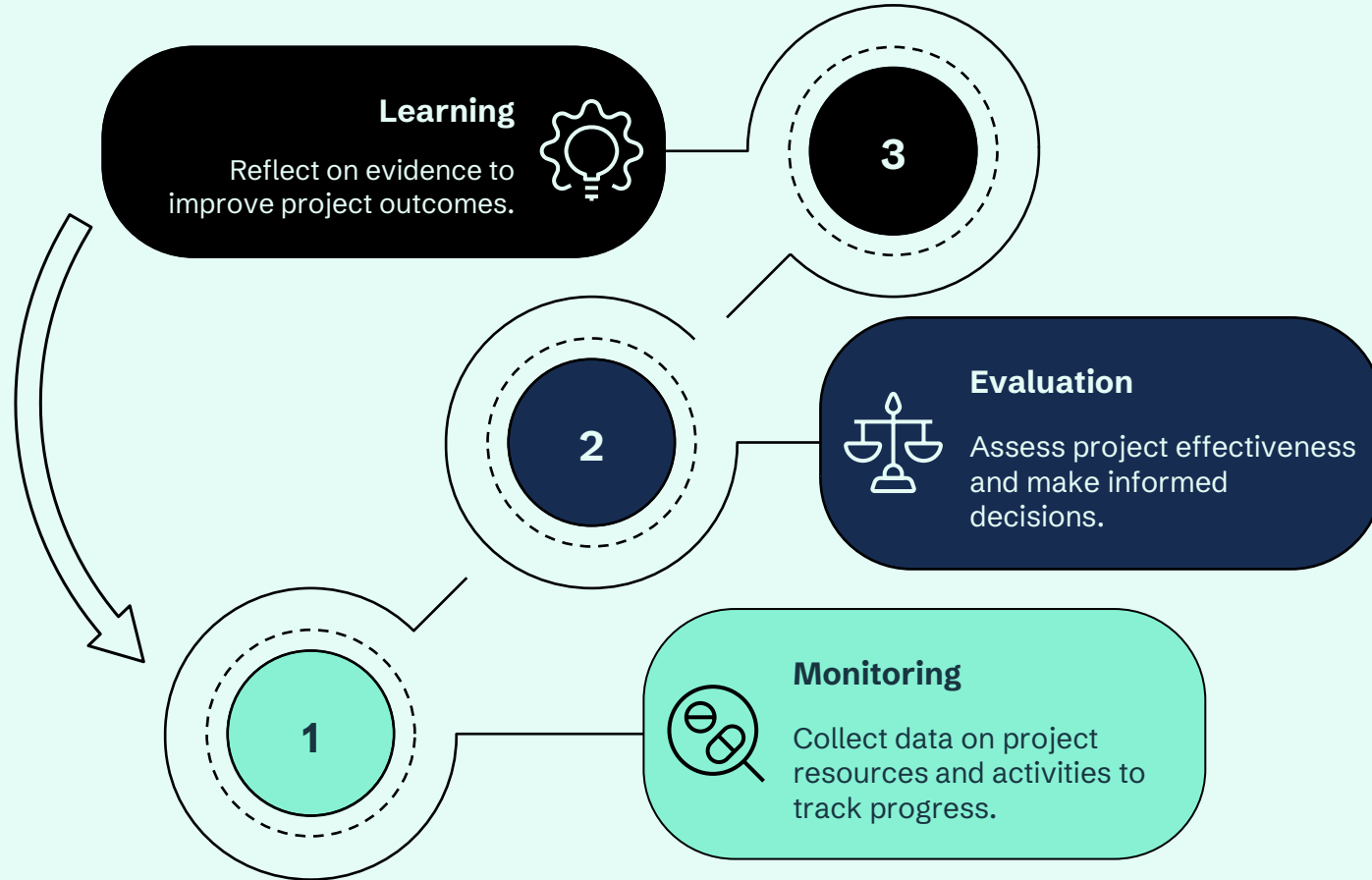
Connects your initial planning to final results with continuous learning along the way.

Evidence-Based Results

Uses actual results to guide decision-making, ensure accountability, and strengthen reporting.



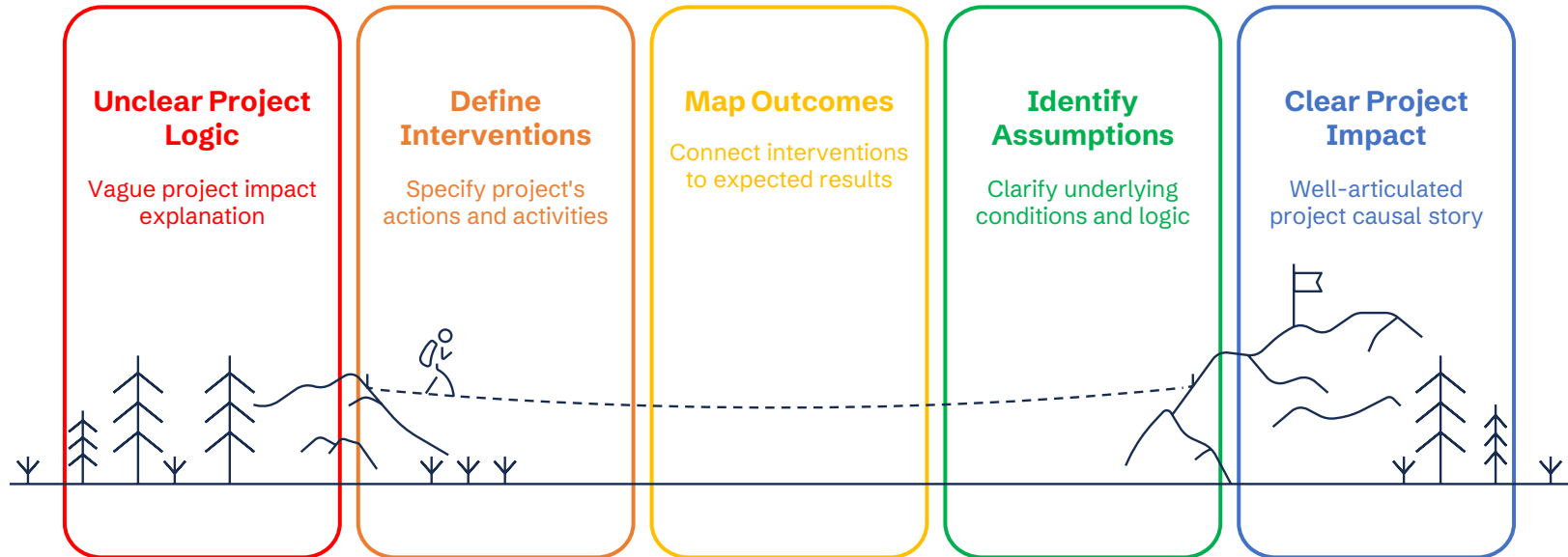
The Monitoring, Evaluation & Learning (MEL) Cycle



Theory of Change (ToC)

Explaining How Your Project Creates Change

A ToC is your project's causal story. It explains how your set of interventions is expected to lead to a specific, desired change. It connects your actions to your ultimate impact, making clear the assumptions and risks along the way.



Note: A formal ToC diagram is NOT required for BESTLIFE2030 proposals. However, you are expected to articulate this logic clearly in your project description.

BESTLife 2030 THEORY OF CHANGE

"Hello and welcome! I'm here to guide you through our **Theory of Change** - a clear framework for how we create meaningful and lasting impact."



Provide technical and financial resources to support biodiversity projects

Develop partnerships with local and international conservation organisations

Organise capacity-building workshops and training programs for stakeholders

Facilitate community engagement and participation in conservation initiatives

INPUTS

Projects developed for local and regional biodiversity conservation

Projects implemented and monitored to ensure project quality and impact

Partnerships strengthened and community participation enhanced

Sustainability of projects supported and exit strategy of BESTLife2030 developed

Projects delivered, and training enhances organisational capacity

Tangible contributions made to global biodiversity targets

Cross-border collaborations and policy contributions enhanced

Knowledge sharing promoted across biodiversity initiatives

OUTPUTS

Communications products created by grantees for awareness campaigns

Grant making processes centralised via portal for implementation

Mechanisms developed to track progress and share lessons

Knowledge sharing promoted across biodiversity initiatives

OUTCOMES

Strengthen the capacity to build, implement, and sustain conservation-led projects

Improve project sustainability and expand biodiversity conservation efforts

Advance contributions to regional and international biodiversity strategies

IMPACT



Advance biodiversity conservation by supporting sustainable and effective local projects in the European Union's (EU) Outermost Regions (ORs) and Overseas Countries and Territories (OCTs)

"Step 1: **Inputs** - the essential resources that drive the programme forward. This includes funding, expertise, partnerships - everything needed to carry out activities and deliver results effectively!"



"Step 2: **Outputs** - the tangible products and services delivered as a result of project activities. These could be training programmes, policy guidelines, or other direct results that set the stage for lasting change."



"Step 3: **Outcomes** - the real-world changes that emerge once outputs are in place. These include shifts in knowledge, behaviours or practices among beneficiaries, leading to stronger capacities and improved performance."



"Step 4: **Impacts** - the ultimate change in state, condition, or well-being that the programme contributes to. This is the long-term, sustainable transformation experienced by beneficiaries - healthier ecosystems, or effective conservation areas."



Why Use a Theory of Change?



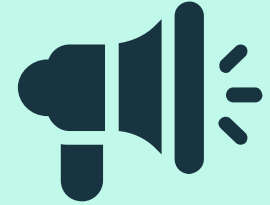
Strategy Tool

- Achieve a shared understanding of the project.
- Make projects more effective by understanding outcomes and their causes.
- Identify hidden assumptions and their importance.



M&E Tool

- Determine what needs to be measured (and what doesn't).
- Encourage teams to think about evidence in a focused way.
- Prompt critical reflection and re-thinking of approaches.



Communication Tool

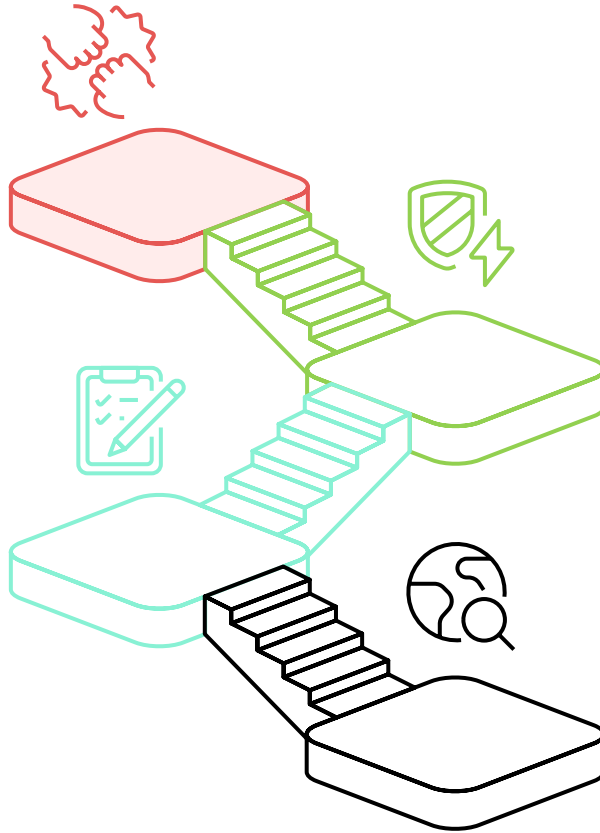
- Provide a quick visual summary of the project's aims.
- Give confidence to external parties that the pathway to change is understood.
- Highlight and describe the process of change to stakeholders.

Developing Your ToC Logic: 4 Key Steps

Engage Partners

Identify key actors critical for project success.

4



3

Address Risks

Make assumptions and potential risks explicit. What conditions must be true for your project to succeed? What could go wrong.

2

Identify What's Needed

Outline the specific outcomes and outputs needed to solve the problems you've identified.

1

Focus on High-level Change

How will your project contribute to BESTLIFE2030's overall goal of advancing biodiversity conservation?.

From ToC to Action: The LogFrame

Theory of Change (The 'Why')

What is the Theory of Change (ToC)?

It describes the broad process of change and the underlying assumptions. It's your strategic narrative.

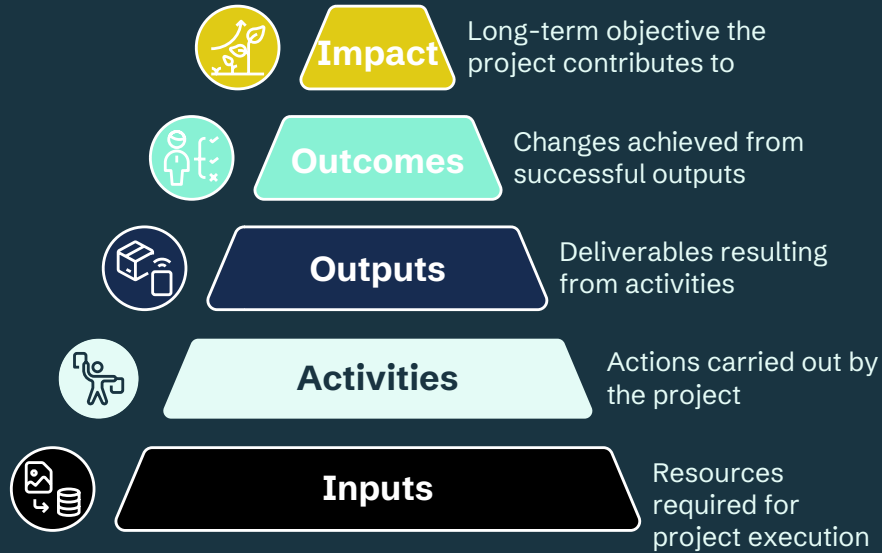
LogFrame (The 'How')

What is the LogFrame?

It's a tool to track results against plans using indicators, baselines, and targets. It's your operational plan and monitoring tool.

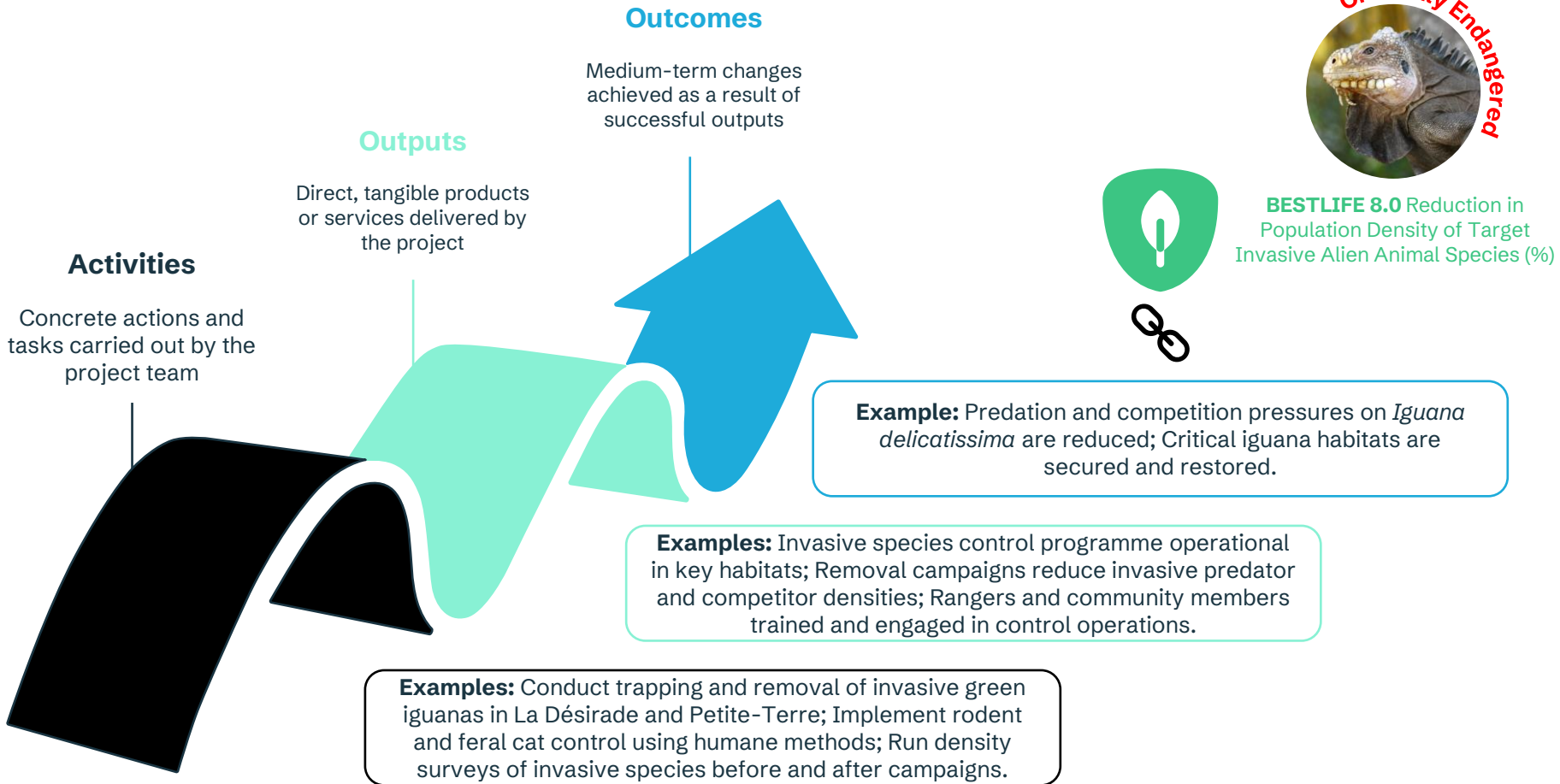


Deconstructing the Results Chain



The Results Chain shows the logical sequence from the resources you use (Inputs) to the long-term change you contribute to (Impact). If we provide the Inputs and do the Activities, we will get the Outputs, which lead to the Outcomes, which contribute to the Impact.

Building Your LogFrame: Results



NARRATIVE

LOGICAL FRAMEWORK & MONITORING PLAN

SAFEGUARDS

BUDGET

CHECKLIST & SUBMISSION

Logical framework

Project monitoring plan

Project timeline

LOGICAL FRAMEWORK

Previous

Continue

Project Overall Objective:

To restore and secure viable populations of the critically endangered Lesser Antillean iguana (*Iguana delicatissima*) on Guadeloupe by reducing predation and competition from invasive species.

Outcomes	Outputs	Activities
O1 Predation and competition pressures on <i>Iguana delicatissima</i> are reduced through the effective removal of invasive green iguanas and mammalian predators.	<p>O S1.1 A coordinated invasive species control programme is operational in critical iguana habitats, targeting green iguanas, mongooses, and feral cats.</p> <p>O S1.2 Systematic removal campaigns lead to measurable reductions in invasive predator and competitor densities.</p> <p>O S1.3 Local rangers and community members are trained and actively engaged in invasive species control operations.</p> <p>Add Outputs</p>	<p>A1.1.1 Conduct systematic trapping and removal of invasive green iguanas in key areas at La Désirade and Petite-Terre.</p> <p>A1.1.2 Implement rodent and feral cat control measures using humane and ecologically safe methods.</p> <p>Add Activities</p> <p>A1.2.1 Conduct regular density surveys of invasive species before, during, and after control campaigns.</p> <p>A1.2.2 Map hotspots of invasive species activity to prioritize control efforts.</p> <p>Add Activities</p> <p>A1.3.1 Organise training workshops on invasive species identification, trapping, and removal techniques.</p> <p>A1.3.2 Deploy trained teams to carry out removal campaigns under supervision of project coordinators.</p> <p>Add Activities</p>
O2 Critical iguana habitats are secured and restored, including predator-free refuges and improved nesting and foraging areas.	<p>O S2.1 Predator-exclusion zones are established in key iguana habitats, creating safe nesting and foraging areas.</p>	<p>A2.1.1 Design and construct predator-proof fencing around nesting and foraging sites.</p> <p>A2.1.2 Monitor predator-free zones for incursions and repair or reinforce fences as needed.</p>

Building Your LogFrame: Measurement

Making Your Results SMART

Identify Indicators

Define how progress will be measured - can be quantitative (numbers) only



Ensure SMART Criteria

Verify indicators meet SMART criteria - Specific, Measurable, Achievable, Relevant, Time-bound



Establish Baselines

Determine the starting point for measurement - reference point from which to measure progress



Set Targets

Define achievable goals for each indicator - the finish line



NARRATIVE

LOGICAL FRAMEWORK & MONITORING PLAN

SAFEGUARDS

BUDGET

CHECKLIST & SUBMISSION

- Logical framework
- Project monitoring plan**
- Project timeline

Previous Continue

PROJECT MONITORING PLAN

Indicators	Frequency		Baseline	Target
<p>⊖ O1. Predation and competition pressures on Iguana delicatissima are reduced through the effective removal of invasive green iguanas and mammalian predators.</p>				
BESTLIFE1. Annual Change in Population Trends or Habitat Occupancy of Targeted Species	Reporting Period	<input type="checkbox"/> N/A	150	200
BESTLIFE2. Reduction in Key Threats Affecting Target Animal Species	Reporting Period	<input type="checkbox"/> N/A	0	50
BESTLIFE8. Reduction in Population Density of Target Invasive Alien Animal Species (%)	Reporting Period	<input type="checkbox"/> N/A	30	15
<p>+ Add Indicator</p>				
<p>⊖ O2. Critical iguana habitats are secured and restored, including predator-free refuges and improved nesting and foraging areas.</p>				
BESTLIFE4. Area of Terrestrial and Freshwater Habitats Under Active Conservation Actions (km2)	Reporting Period	<input type="checkbox"/> N/A	0	1.5
BESTLIFE7. Area of Habitat Under Direct Invasive Alien Species Management Action (km2)	Reporting Period	<input type="checkbox"/> N/A	0	0.5
BESTLIFE10. Area of Forest Under Active Restoration and Recovery (km2)	Reporting Period	<input type="checkbox"/> N/A	0	1
<p>+ Add Indicator</p>				
<p>⊖ O3. A functional biodiversity monitoring system provides reliable data on Iguana delicatissima populations and invasive species trends.</p>				
BESTLIFE11. Number of Collaborations Forged or Enforced	Reporting Period	<input type="checkbox"/> N/A	1	3
BESTLIFE13. Number of People Trained	Reporting Period	<input type="checkbox"/> N/A	0	15
BESTLIFE14. Number of Volunteers Involved in Project Activities	Reporting Period	<input type="checkbox"/> N/A	0	20
<p>+ Add Indicator</p>				

Previous Continue

BESTLIFE2030 MEL Essentials

Enhanced indicators

Tailored metrics designed to provide deeper insights into project outcomes

MEL Handbook and Indicator Atlas

Comprehensive guides for effective monitoring and evaluation practices

Mandatory indicators

Essential metrics required for compliance



Six Clusters of Impact

**Climate
Vulnerability
(BESTLIFE 21)**

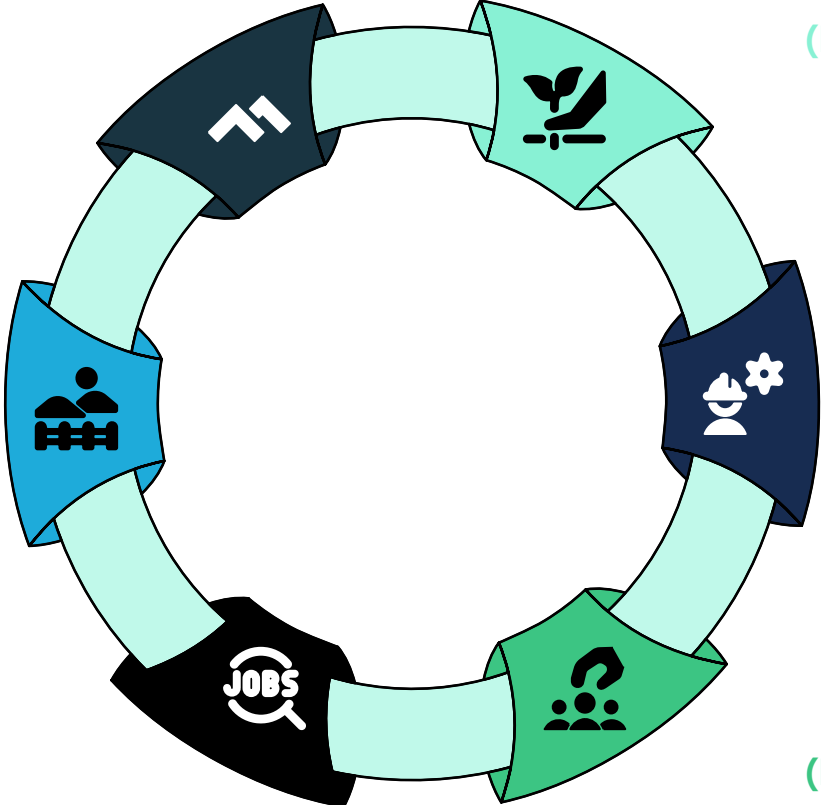
**Biodiversity
(BESTLIFE 1 - 10)**

**Enabling
Conditions
(BESTLIFE 11 - 12)**

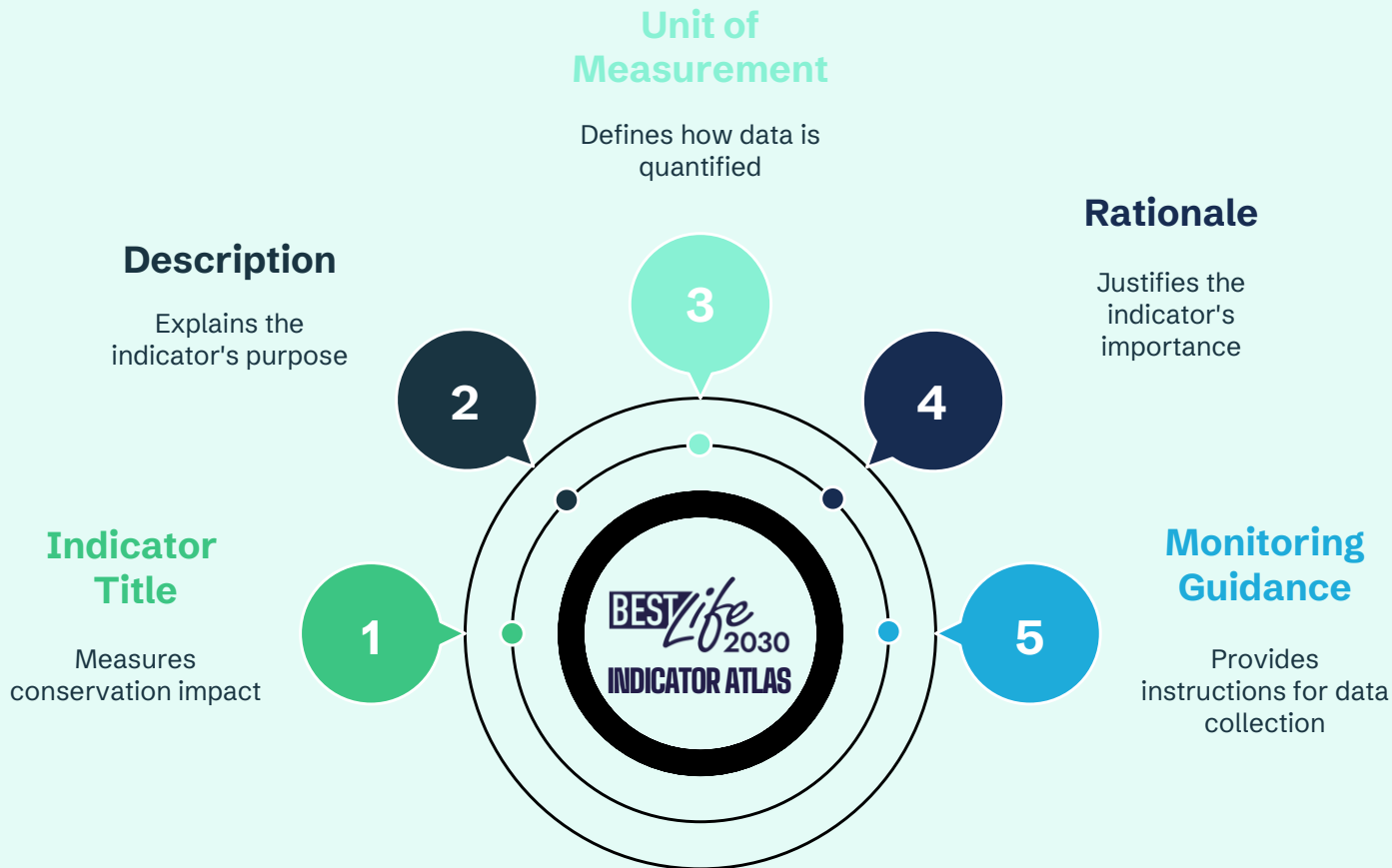
**Protected
Areas
(BESTLIFE 19 - 20)**

**Outreach
(BESTLIFE 13 - 17)**

**Employment
(BESTLIFE 18)**



Indicator Atlas Structure



BESTLIFE2030 Indicators

All projects **MUST** contribute to at least ONE indicator from the 'Biodiversity' category. You are also strongly encouraged to include indicators from other categories where applicable.



Biodiversity (Mandatory)

Projects must select at least one biodiversity indicator.

Example: BESTLIFE 4.0 - Area of Terrestrial and Freshwater Habitats Under Active Conservation Actions (km²).



Other Categories

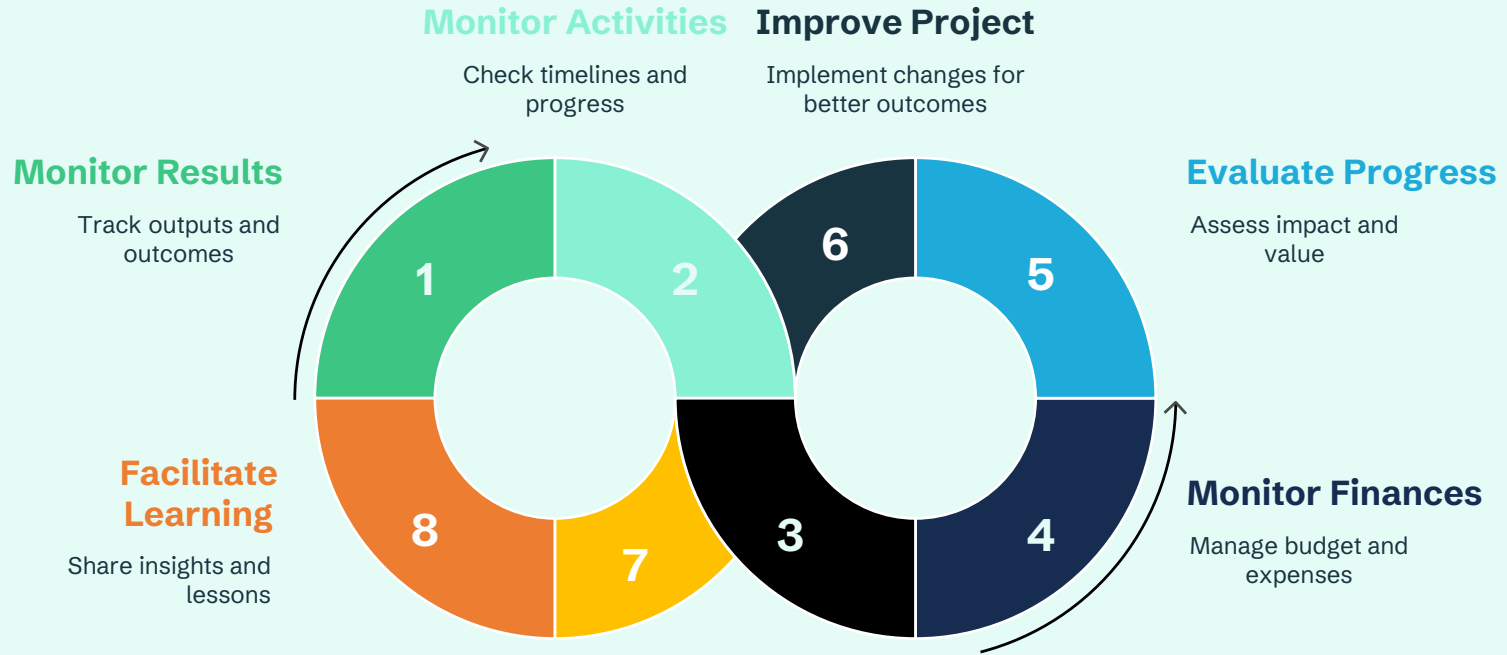
Projects are strongly encouraged to also select indicators from enabling conditions, outreach, employment, protected areas, or climate vulnerability categories.



Key Reminder

At least one **Biodiversity indicator** is mandatory. Other categories are optional but recommended to strengthen your proposal.

Bringing It All Together: Monitoring & Evaluation



Project Monitoring: This is the routine tracking of your project against your LogFrame and Monitoring Plan. It is a continuous process that includes monitoring 1 to 4.

Project Evaluation: This is a periodic, deeper assessment of your project's progress, impact, and value. Evaluation helps with 5 to 8.

Key Takeaways

1



Clear Conservation Problem

Start with a clear conservation problem and a logical pathway to impact.

2



Use LogFrame

Use the LogFrame as your primary tool for planning, managing, and monitoring results.

3



Define SMART Indicators

Define clear, SMART indicators with realistic baselines and targets.

4



Select BESTLIFE2030 Indicator

Remember to select at least one mandatory BESTLIFE2030 Biodiversity indicator.

5



Continuous MEL

Are processes that ensure your project stays on track and achieves real, tangible results for biodiversity conservation.

Resources & Questions

V.01 2023 - 2024

BESTLife
2030

The BESTLIFE2030 Grantee Handbook for Monitoring, Evaluation & Learning



Coordinator: UCH

Regional hubs: UCH, OCB, UCH, UCH, NORDECO

Donors: Co-funded by the European Union

Associated partners: OCTA



Got questions?

For detailed, project-specific inquiries, please email us while copying your regional hub. We will collect all questions and provide responses within one week.



BESTLife
2030

INDICATOR ATLAS

Coordinator: UCH

Regional hubs: UCH, OCB, UCH, UCH, NORDECO

Donors: Co-funded by the European Union

Associated partners: OCTA





IUCN - International Union for Conservation of Nature
EU Representative Office
Boulevard Louis Schmidt 64
BE-1040 Brussels, Belgium

bestlife2030@iucn.org
bestlife2030.org



SIGN UP TO OUR NEWSLETTER

Coordinator

Regional hubs

Associated partners

Donors



Co-funded by
the European Union

